

MAGNA Black Halo Diffused Magnetic 12W LED

Model No. MSL208-BLK

Project Details

Job Name	
Location	
Type/Qty	
Contact Info	
Note	

Features

- Multi directional aiming capability
- Magnetically attaches firmly and easily to any position along track
- 620 lumen LED
- INPUT: 24VDC
- INPUT POWER: MAX. 12W
- CRI: >80
- BEAM: Diffuse
- Color Temp: 3000K (2700K and 4000K also available as Special Order)
- ETL tested and approved to ensure both safety and quality

SPECIFICATION

OAH (in.)	6.4
Overall Width (in.)	5.1
OA Depth (in.)	4.7
Dimmable	Yes
Voltage	24VDC
Certifications and Listings	ETL Listed
Warranty	5 Years

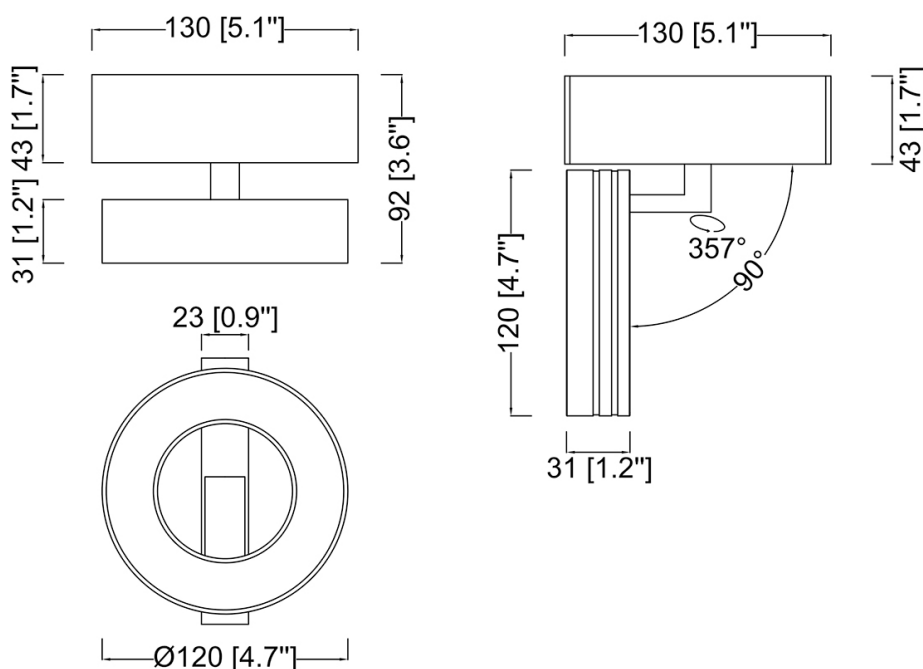
LED Info

Watts (W)	12
Lumens (lm)	620
lm/W	620
CCT	3000K
CRI	>80



Description

MAGNA Slim-Trac Magnetic Lighting System 12W LED Halo Diffused Magnetic track spot light in a Sandy Black finish



KENDAL Lighting (BC) Inc.

#110, 6780 Dennett Place Delta, B.C. V4G 1N4 Ph: (604) 952-5510 · Toll Free: 1-888-306-3267

info@kendallighting.com www.kendallighting.com